



**106 Elstree Road, Bushey, WD23 4GQ**

**£3,400 PCM**

Welcome to this charming chalet bungalow situated in the highly sought-after area of Bushey Heath, Hertfordshire, directly opposite the prestigious Immanuel School.

As you approach the property, you are greeted by a large driveway that provides ample parking for multiple vehicles. The bungalow also features a spacious garage, perfect for secure parking or additional storage. There is also a good-sized mature rear garden, offering a tranquil outdoor space.

The ground floor boasts three versatile reception rooms, providing ample space for entertaining. The well-appointed kitchen is designed with functionality in mind, offering plenty of counter space and storage options.

The property includes four bedrooms- the master bedroom is particularly spacious, with ample natural light and plenty of wardrobe space. Two well-maintained bathrooms serve the property, one being a large en-suite to the master bedroom.

To arrange a viewing, call 020 3271 0111



**Reception**



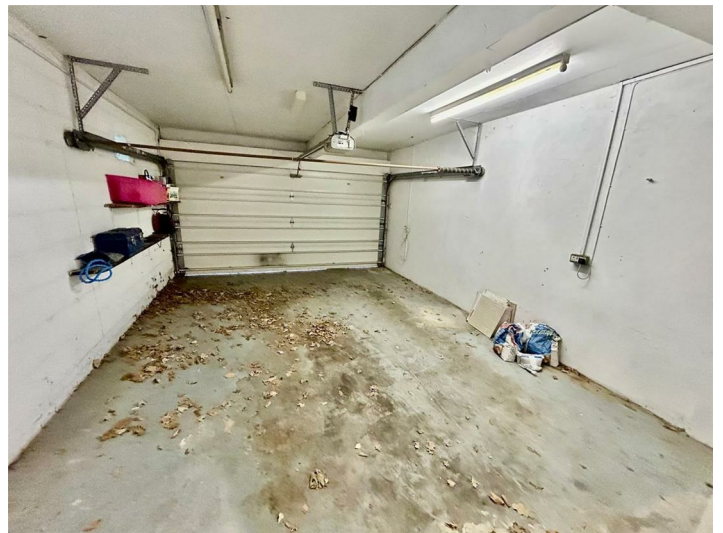
**Entrance Hall**



**Kitchen**



**Garage**



**Bathroom**



**Master Bedroom**





**Bedroom Two**



**Wardrobe**



**Dining Room**



**En-Suite Shower Room**



**Bedroom Three garage (garage)**



**Bedroom Four**



**Storage**

**Living Room**





**Garden**



**Front Elevation**



**Utility Room**



Floor Plan

